



Sta 4582 = Stangers South fence

4780. = 463.00 ft W. of Stangers East fence. (see notes made
 in 1879. for Wm Hodson & Jos. Allen.) 2860.5 = point 75. Ft. W. of Sec. cr.
 5204 = irrigating
 ditch N.W. size 4' x 12" Sta. 5929.5 is in the Morand Fe.
 Lane near South side, from which Ben Tom. Pk bears East
 of foresight 15°-47' or, N 16°-08'-30" E (true course). This point
 marked by a nail driven to surface - ties as follows:
 N.E. 72.85 ft. to large cottonwood tree. N.E. 81.5 ft. to S.W.
 cor. Henry Sharps Brick House - S.W. 37.09 ft. to blazed
 in cedar post, at bottom. S.W. cor. of Wm Prices old house
 bears 8°-32'30" West of foresight. The N.E. cor. Sec. 24. T.6. N. R. 2. W.
 bears N 8°-13' W (true) 1373. Ft. distance.

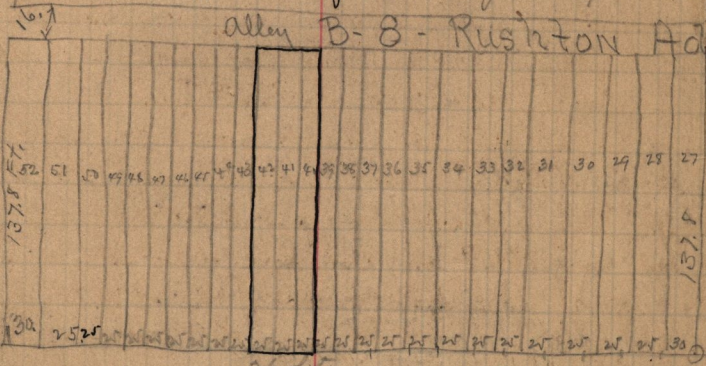
see page 69
 Plat book
 see book
 J. J. 29
 field notes

Lots - 40-41-42 - Block 8 - Rushton Add.

Luke Crashaw.

surveyed Jan 8-1892 - Self & Baird

get maps - 22 lot Jackson



VAN BUREN

304.5 ft. -- ~~22~~ ²⁰ NO Street

Feb. 8-1911 - Surveyed lots 49-50. Blk 8. - Rushton Add.
 for Geo. G. Sawyer.

55
 43.5
 111.5 (see book P. p. 77)